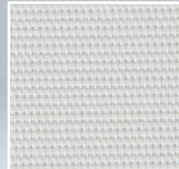
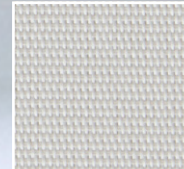


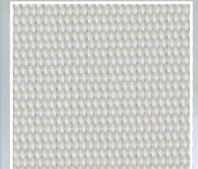
M-Screen



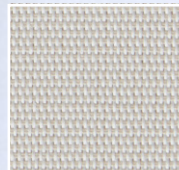
White/White 5%



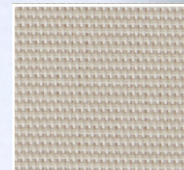
White/Lotus 5%



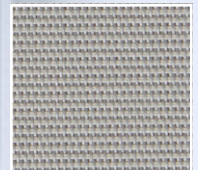
White/Stone 5%



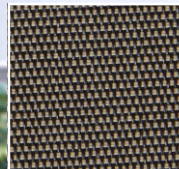
White/Linen 5%



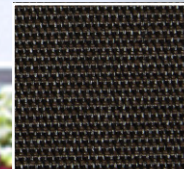
Linen/Stone 5%



Pearl/Linen 5%



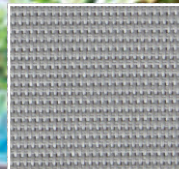
Charcoal/Sable 5%



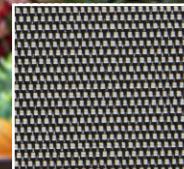
Charcoal/Cocoa 5%



White/Pearl 5%



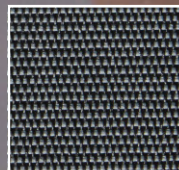
Pearl/Pearl 5%



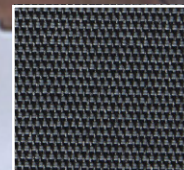
Charcoal/Linen 5%



Charcoal/Lotus 5%



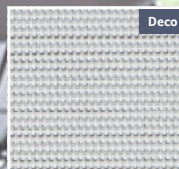
Charcoal/Pearl-Grey 5%



Charcoal/Grey 5%



Charcoal/Charcoal 5%



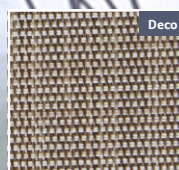
Oyster Shell 5%



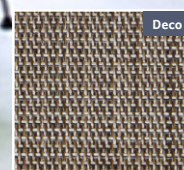
Silver Frost 5%



River Rock 5%



Tumbleweed 5%



Flagstone 5%



Granite 5%

MERMET



Sunscreen Fabric

Roller Blind | Roman Shade | Panel Glide
2.5m, 3.1m widths*

M-Screen

Technical Information

	5% Openness Plain weave	5% Openness Deco
Composition:	36% Fibreglass, 64% PVC	
Thickness:	0.52mm ± 10%	0.52mm ± 5%
Weight:	400g/sm ± 5%	385g/sm ± 5%
Weave Construction:	1 (Warp) x 2 (Weft)	1 (Warp) x 2 (Weft)
Stiffness:	40mm ± 5%	40mm ± 5mm
Breaking Strength: (AS 2001.2.3)	Warp > 1800N, Weft > 1800N	Warp > 1377N, Weft > 1567N
Tearing Resistance: (AS 2001.2.10)	30N Warp, 25N Weft	38.8N Warp, 42.5N Weft
Cutting*:	Ultrasonic, Knife, Crush Cut & Pressure Cut. Can be rail roaded.	
Colourfastness:	6-7 Blue Scale (AS 2001.4.21)	
Features:	M-Screen Fabric has been tested and is Greenguard® Gold Certified to meet strict certification criteria for low Volatile Organic Compound (VOC) emissions and is acceptable for use in environments such as schools and healthcare facilities (IEQ-11).	
Fire Retardancy Information:	Independently tested to AS1530.2^ and AS1530.3*. Suitable for classes 1,2 to 9 (a)-(c) buildings as per BCA.	
	Plain 5%	Deco 5%
	Ignitability Index* (Range 0-20):	0
	Spread of Flame Index* (Range 0-10):	0
	Heat Evolved Index* (Range 0-10):	0
	Smoke Developed Index* (Range 0-10):	4
	Flammability Index^:	12
Range:	Item:	Width: Roll Length:
	5% Plain - 0850525000XXXXH	2500mm 67.5 sqm
	5% Deco - 085552500DXX	2500mm 67.5 sqm
	5% Plain - 0850531000XXXXH	3100mm 83.7 sqm
Care & Cleaning	Dusting with a feather duster is all that is required to keep your fabric looking good. For the removal of stains, dirt and grime, gently wipe fabric skins with a sponge soaked in lukewarm water. If marks are still visible, add a little detergent. Then dry gently with a clean cloth. Test in inconspicuous area before spot cleaning.	

Thermal & Visual Properties

Thermal Comfort				Glazing & Fabric		Visual Comfort
Colour	Ts	Rs	As	GTOT A	GTOT C	TL / TV
5% Plain						
White/ White	19	71	10	0.32	0.34	16
White/Lotus	24	63	13	0.38	0.37	22
White/Stone	21	61	18	0.38	0.37	18
White/Linen	19	61	20	0.38	0.37	15
Linen/Stone	22	50	28	0.45	0.41	18
Pearl/Linen	12	39	49	0.50	0.44	9
Charcoal/Sable	6	13	81	0.64	0.53	5
Charcoal/Cocoa	5	5	90	0.69	0.55	4
White/Pearl	15	52	33	0.43	0.40	12
Pearl / Pearl	10	33	57	0.53	0.46	7
Charcoal/Linen	6	16	78	0.63	0.52	5
Charcoal/Lotus	6	14	80	0.64	0.52	5
Charcoal Pearl-Grey	5	12	83	0.65	0.53	5
Charcoal /Grey	6	8	86	0.67	0.54	5
Charcoal /Charcoal	3	4	93	0.69	0.55	3
5% Deco						
Oyster Shell	14	61	25	0.29	0.38	12
Silver Frost	13	49	38	0.44	0.41	12
River Rock	10	33	57	0.53	0.46	9
Tumbleweed	10	29	61	0.56	0.48	8
Flagstone	8	20	72	0.61	0.50	7
Granite	7	11	82	0.66	0.53	6

Solar protection indicators are laboratory-tested.
The most relevant and widely used thermal comfort factors include:

THERMAL COMFORT

Fabric Only

Ts Solar Transmittance (%)

Rs Solar Reflectance (%)

As Solar Absorbance (%)

Solar radiation is always partially transmitted through, absorbed or reflected by the fabric. The sum of all 3 equals 100. $T_s + R_s + A_s = 100\%$ of solar energy.

Fabric & Glazing

Test data has been supplied using the following glazing types:

- **A** Clear single glazing (4mm float)
- **B** Clear double glazing (4mm float + 12mm space + 4mm float)
- **C** Double glazing low-e coating and argon filled (4mm float + 16mm space + 4mm float)
- **D** Reflective double glazing with low-e coating and argon filled (4mm + 16mm space + 4mm float)

GTOT (Range 0-1)

The Solar Heat Gain Coefficient (SHGC), measures the window's (fabric and glass) ability to transmit solar energy into a room. The SHGC is commonly referred to as g-tot. SHGC/g-tot is a calculation of the g-values of the solar protection device (fabric) and the glazing (A, B, C, D). The lower the GTOT value, the greater its ability to insulate against solar heat build-up.

VISUAL COMFORT

Fabric Only

TL / TV Light Transmittance (%)
RL Light Reflectance (%)

The fenestration property tests were conducted in accordance with EN 410 (1998), EN 14501:(2005), and EN 14500:(2008).

For more information contact us on:
hdcustservice@hunterdouglas.com.au

mermet.com.au

Note: Colours are as accurate as the printing process allows. Please refer to the fabric swatch. # Not all colours are available for all widths, check fabric label for width information.

© Copyright 2018 Hunter Douglas Limited [A.B.N. 98 009 675 709] MERMET is a registered Trade Mark of Mermet S.A. ENDURIS is a registered Trade Mark of Hunter Douglas Industries Switzerland GmbH. Note: Warranty Conditions apply; refer to www.mermet.com.au for more details. 11/2018